



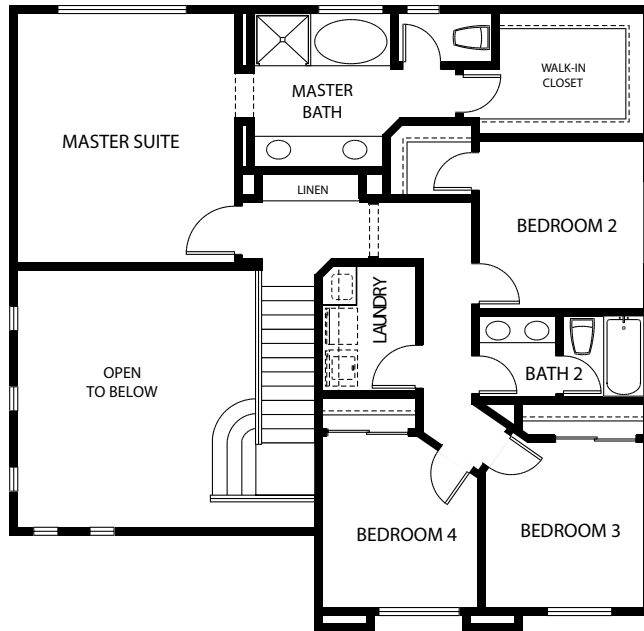
# The Willows

AT BELLEVUE RANCH WEST

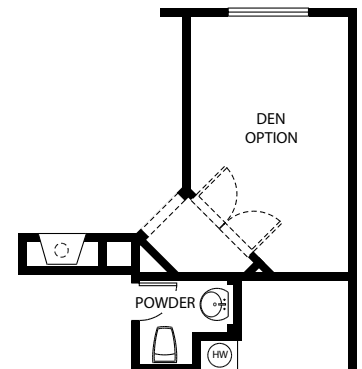
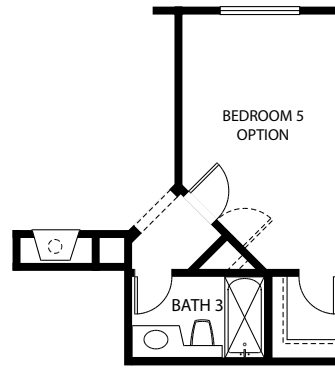
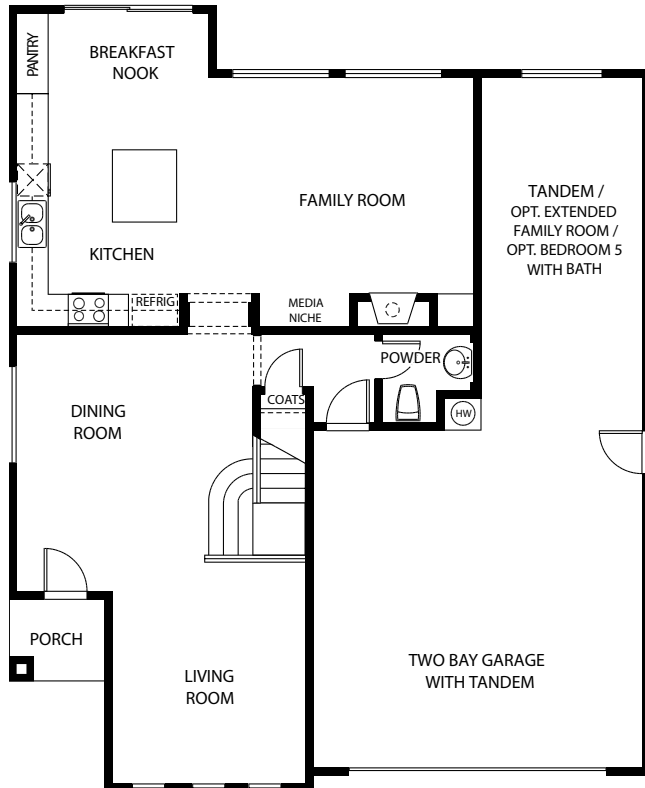
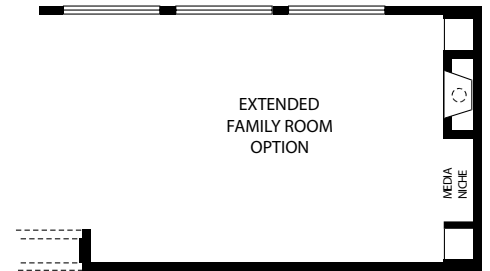
# The Breezes

Plan 4010

Approximately 2184 Sq. Ft.



PRELIMINARY  
(Subject To Change)



Simply The Best. By Design.

[www.woodside-homes.com](http://www.woodside-homes.com)

Seller reserves the right to make changes or modifications to plans, maps, plan specifications, materials, features and colors without notice. Prices are subject to change without notice. Maps, plans, landscaping and elevation renderings are artist's conceptions, are not to scale, and may not accurately depict the homes or lots as they are built. These illustrations may depict options and features that are not standard on all models. Optional features may be included at additional cost and are subject to construction cut-off dates. All references to square footage are approximate and may vary with elevation. Lot fencing and walls may not be included in the purchase, and if included, will vary according to size and location of the lot. Exterior treatments, window locations and room configurations may vary with elevation. Model home interior decorating, landscaping, fencing and other amenities are for display purposes only. This brochure is for illustrative purposes only and not a part of a legal contract.





# The Willows

AT BELLEVUE RANCH WEST

## The Breezes

Plan 4010

Approximately 2184 Sq. Ft.



Elevation A



Elevation B



Elevation C

Enter into the formal Dining and Living Room with 18 foot ceilings and prepare to be impressed.

This 2184 square foot home has an open Kitchen with pantry, island and tile floors which flows into the Family Room that has vast windows providing ample natural light.

The home includes four bedrooms upstairs including the Master Suite with private Master Bath. A conveniently located upstairs Laundry Room is also included.

A third car Garage can be changed to extend the Family Room for entertaining or convert to a 5th bedroom with bath!

### Plan Details

- 4 Bedrooms, 2 1/2 Bath
- Extended Family Room Option
- Optional Bedroom 5
- Den Option
- 3 Car Garage

WOODSIDE HOMES



Simply The Best. By Design.

[www.woodside-homes.com](http://www.woodside-homes.com)

**Esmeralda Sinclair**

Phone 209-386-0710

Fax 209-386-0712

614 Talbott Court,  
Merced, CA 95348

Seller reserves the right to make changes or modifications to plans, maps, plan specifications, materials, features and colors without notice. Prices are subject to change without notice. Maps, plans, landscaping and elevation renderings are artist's conceptions, are not to scale, and may not accurately depict the homes or lots as they are built. These illustrations may depict options and features that are not standard on all models. Optional features may be included at additional cost and are subject to construction cut-off dates. All references to square footage are approximate and may vary with elevation. Lot fencing and walls may not be included in the purchase, and if included, will vary according to size and location of the lot. Exterior treatments, window locations and room configurations may vary with elevation. Model home interior decorating, landscaping, fencing and other amenities are for display purposes only. This brochure is for illustrative purposes only and not a part of a legal contract.

