

# THE WINDSOR



ELEVATION "A"

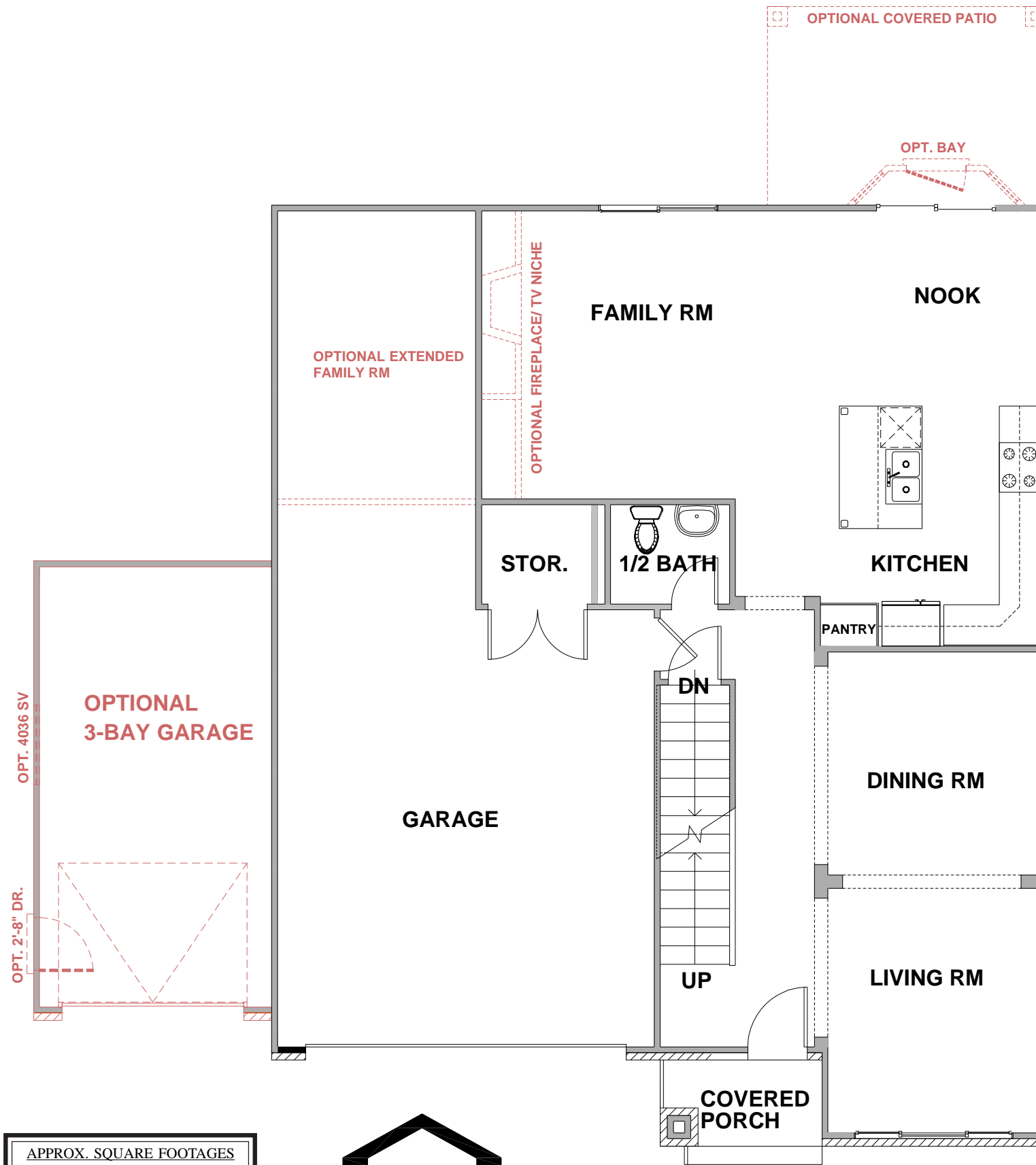


ELEVATION "B"



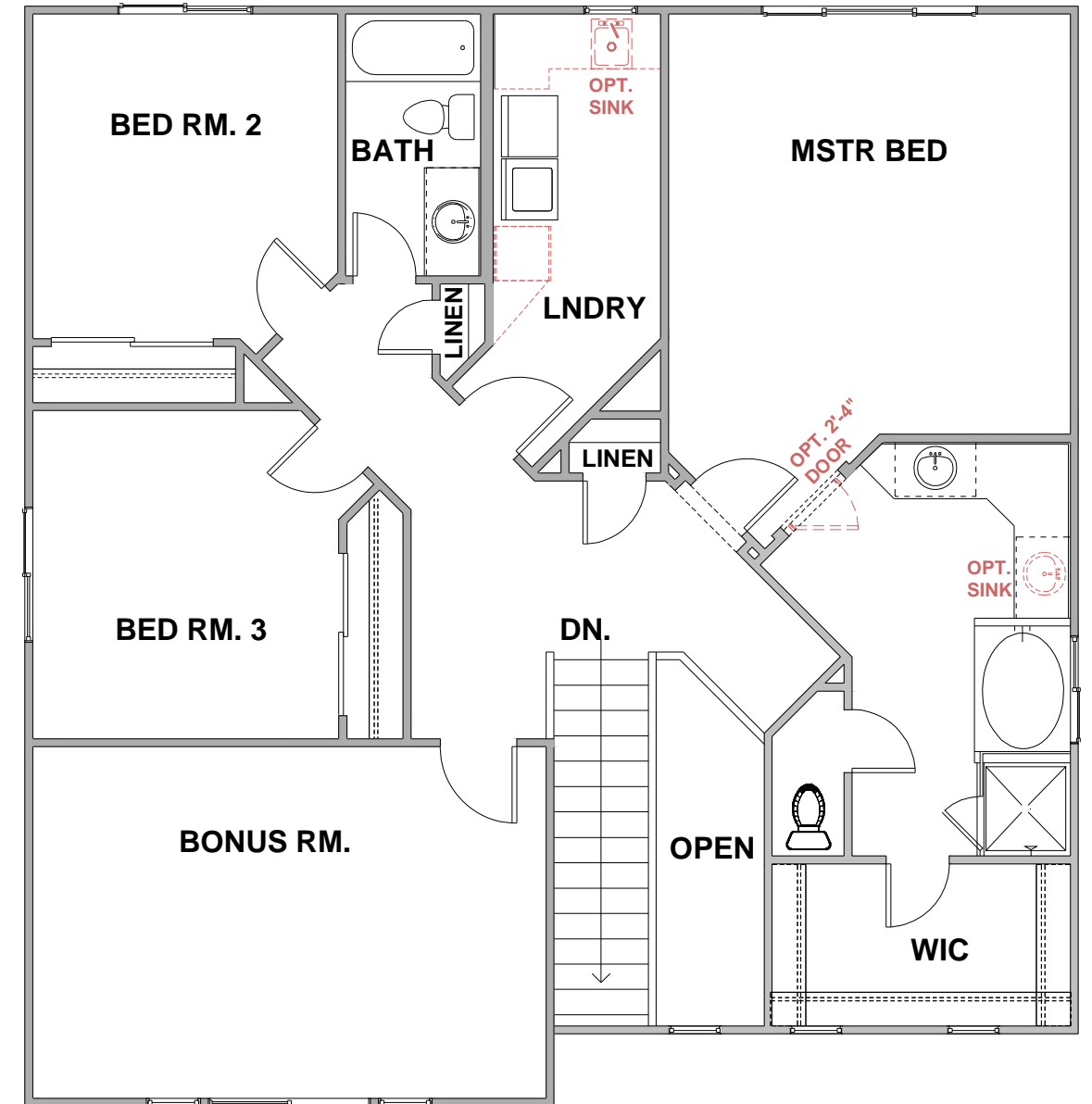
ELEVATION "D"

# THE WINDSOR



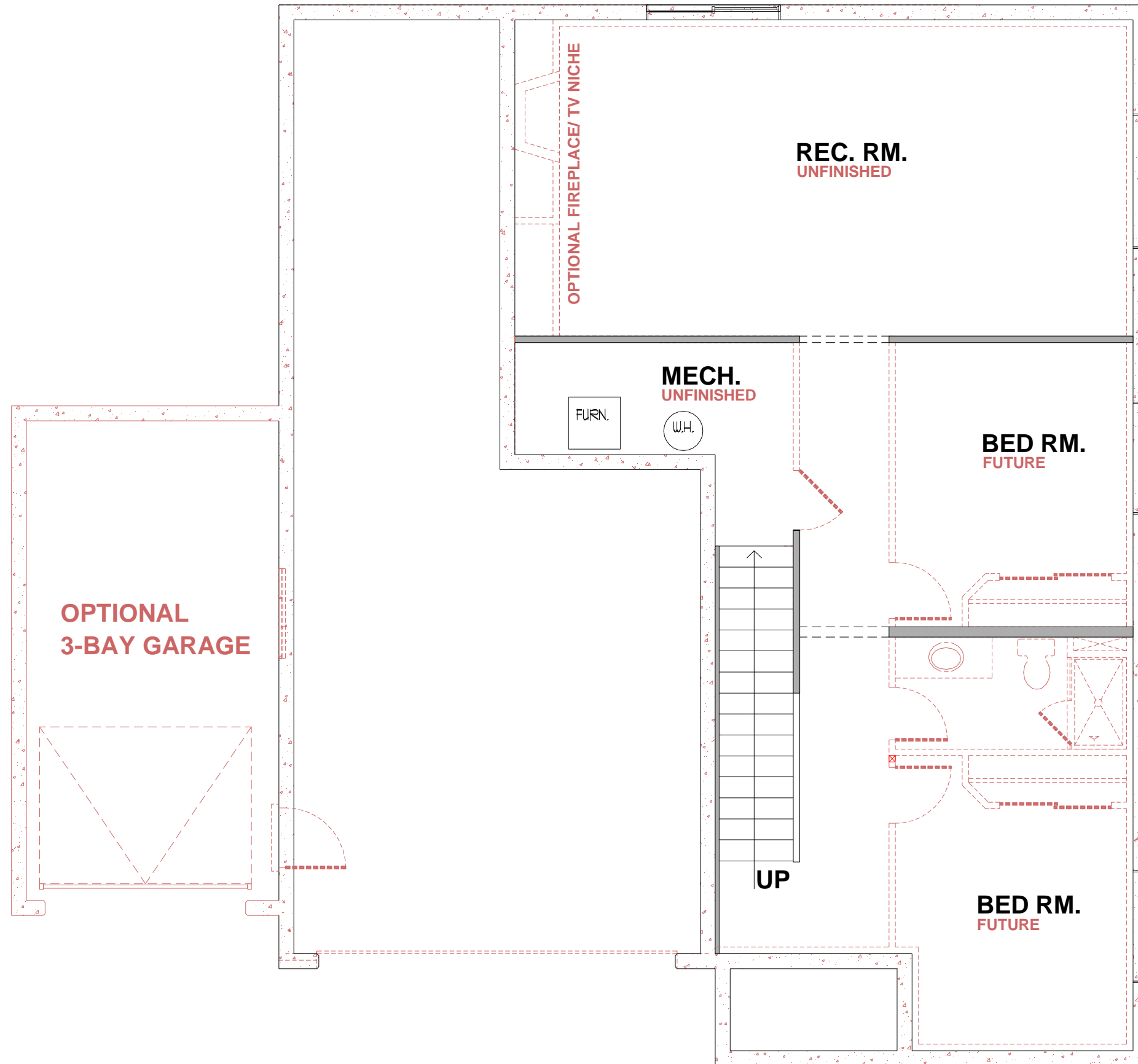
MAIN FLOOR PLAN

APPROX. SQUARE FOOTAGES	
FINISHED.....	2,628
UNFINISHED.....	1,000
TOTAL.....	3,628



SECOND FLOOR PLAN

# THE WINDSOR



UNFINISHED BASEMENT