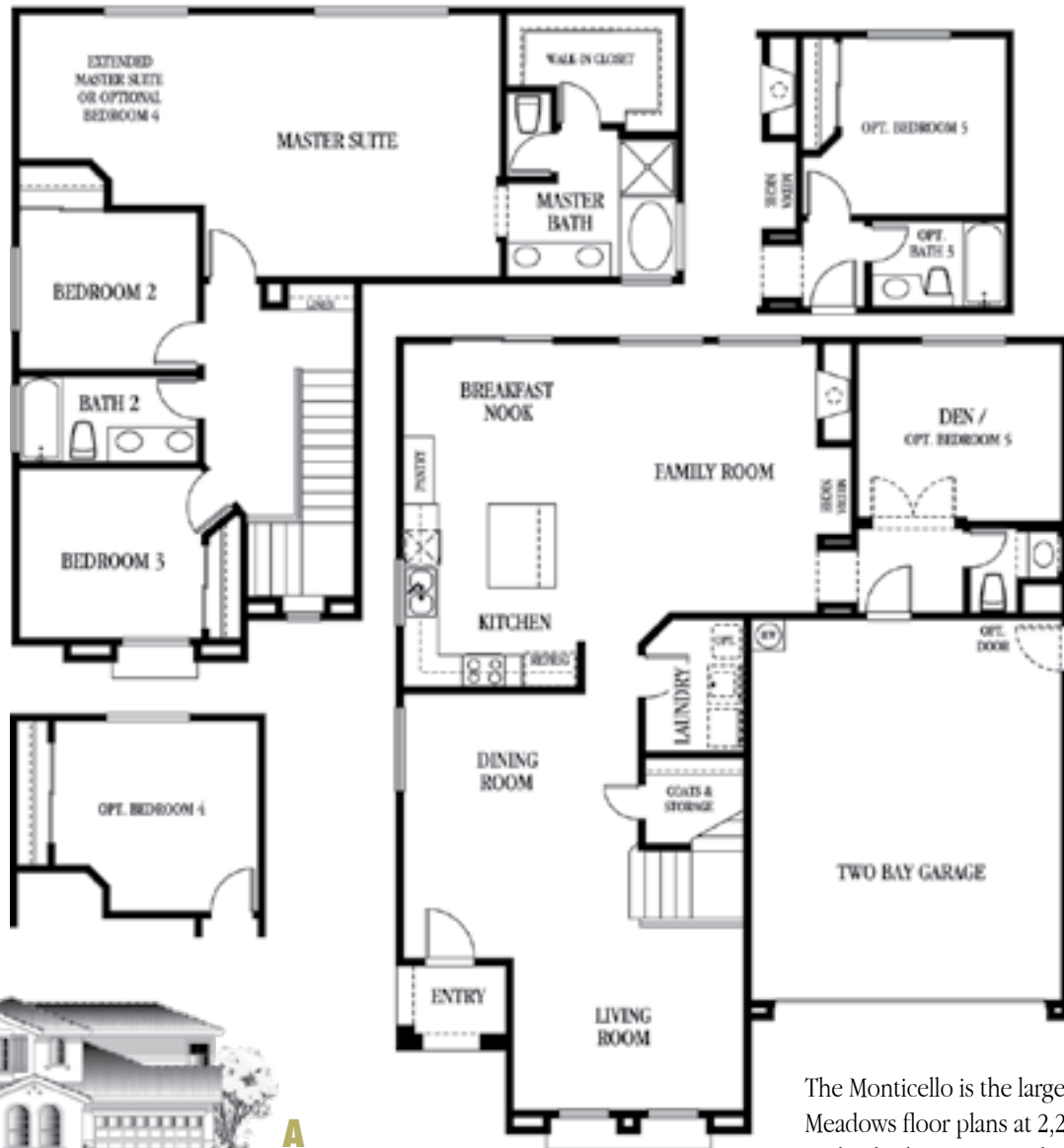


# The Monticello

## Plan 4040

Approx. 2280 Sq. Ft.

- 3 Bedrooms
- 2 1/2 Baths
- Den
- Opt. Bed #4 (in lieu of extended master suite)
- Opt. Bed #5 w/Bath#3 ( in lieu of den and powder)



**A**



**B**



**C**

The Monticello is the largest of the Preston Meadows floor plans at 2,280 square feet. With 3 bedrooms, 2 1/2 baths, formal living room, dining room, large eat in kitchen with island. The master suite has the option of

either the extended sitting area, or you can have a 4th bedroom built in that area. The downstairs den can be built as a 5th bedroom if needed.

Sales Office Hours  
 MON. - SAT. 10:00 AM - 6:00 PM  
 SUN. 12 noon - 6:00 PM  
 Winter Hours, Close 5:00 PM

**WOODSIDE HOMES**

Simply The Best. By Design.



Phone 209-595-0140

Stockton, CA 95209



[www.woodside-homes.com](http://www.woodside-homes.com)