

THE BRADBURY



ELEVATION "A"

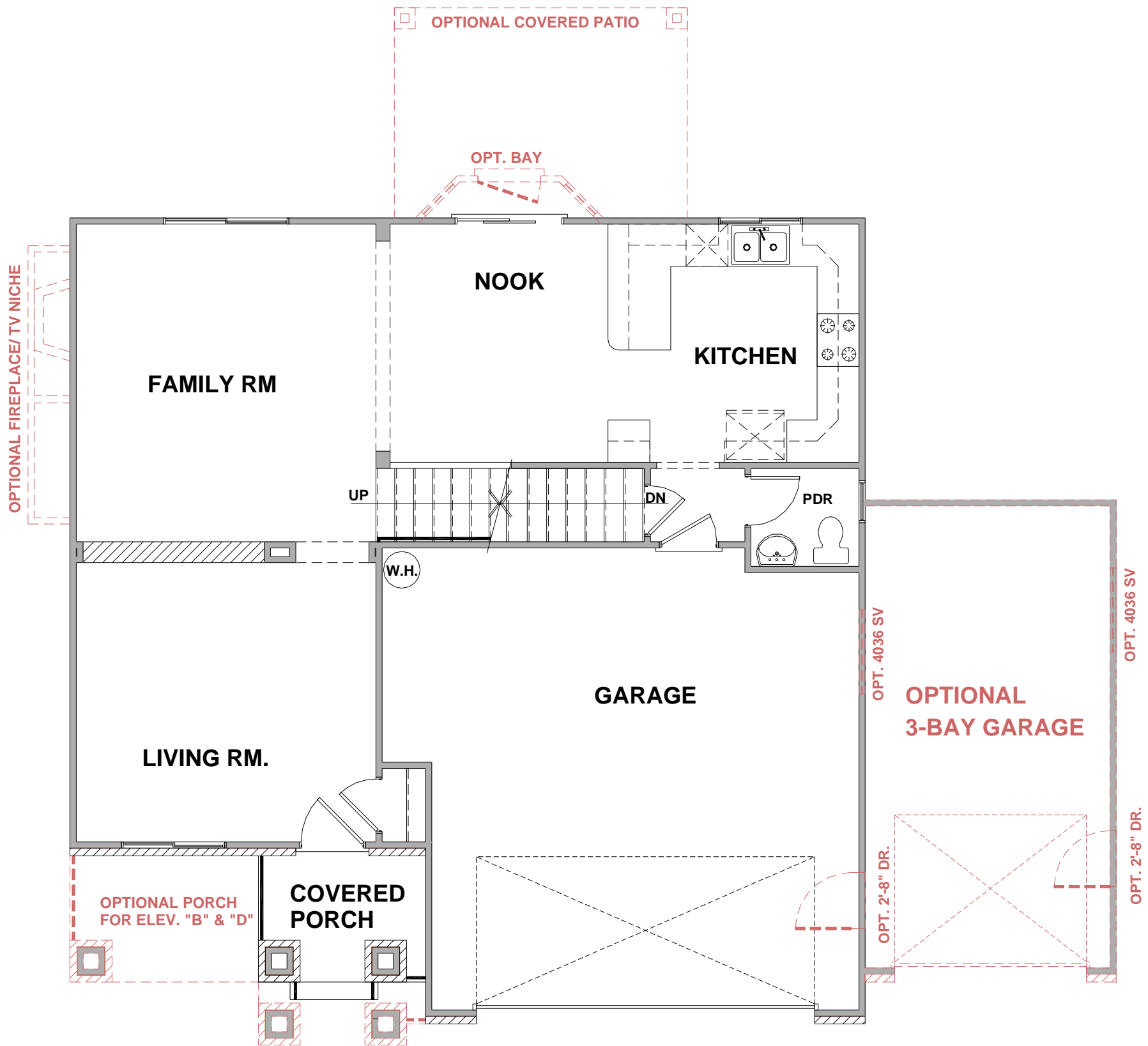


ELEVATION "B"

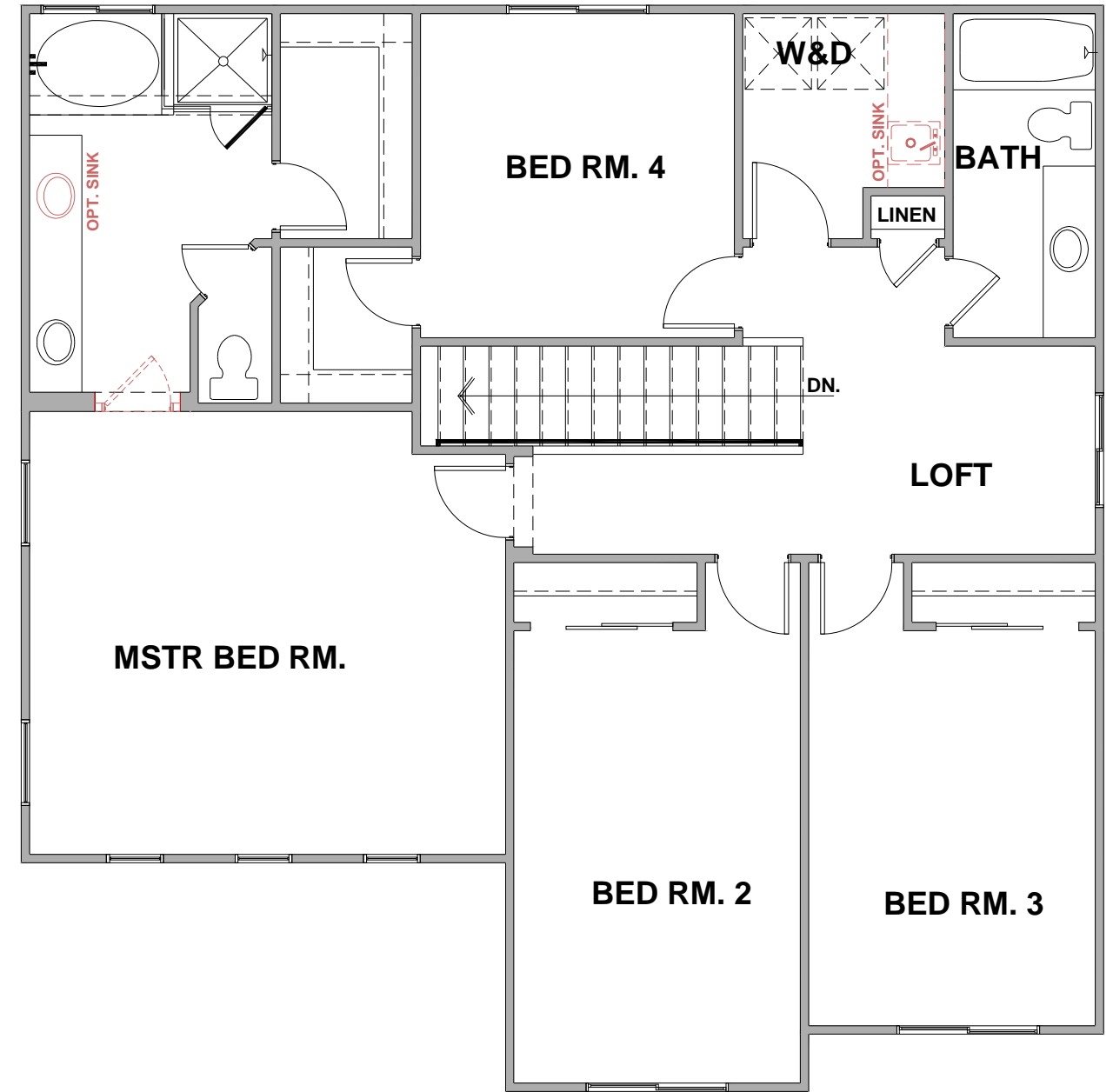


ELEVATION "D"

THE BRADBURY



MAIN FLOOR PLAN



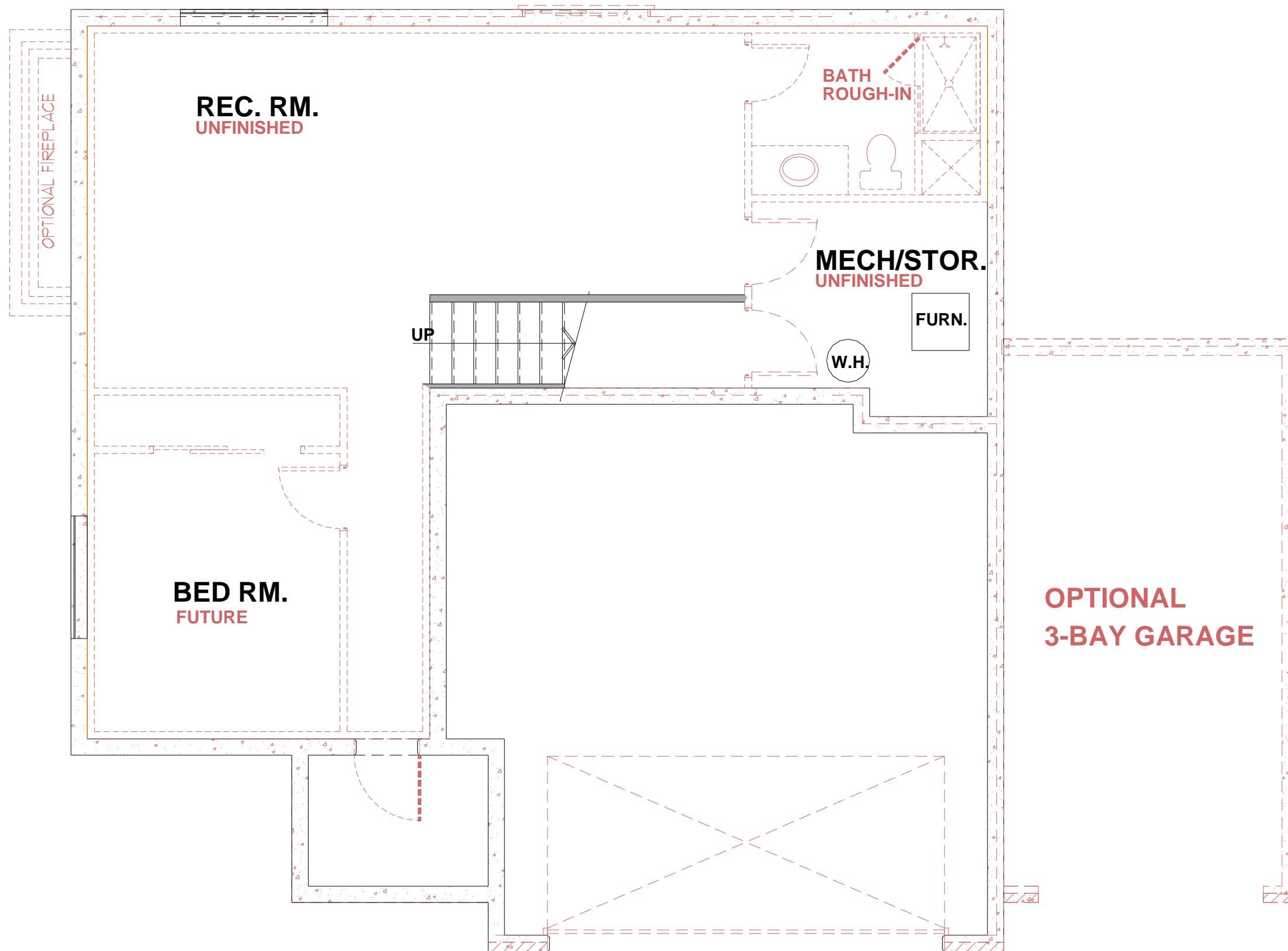
SECOND FLOOR PLAN

APPROX. SQUARE FOOTAGES	
FINISHED.....	2,114
UNFINISHED.....	746
TOTAL.....	2,860



The information contained herein is preliminary in nature and though deemed reliable, is not guaranteed. Prices, features and plans are subject to change without notice.

THE BRADBURY



UNFINISHED BASEMENT