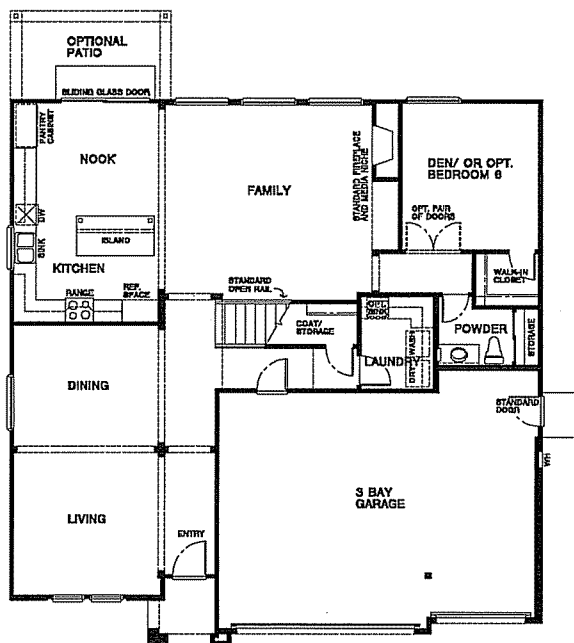


WOODSIDE HOMES

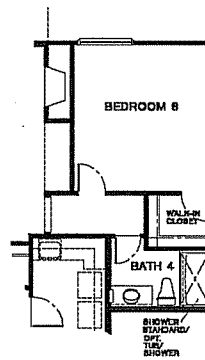
PRELIMINARY
(SUBJECT TO CHANGE)

VILLAPASEO
PLAN # 4831
ALORA

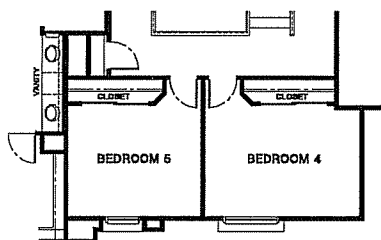
LIVABLE SQ. FT.
3146 APPROX.



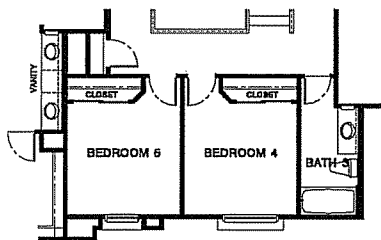
FIRST FLOOR



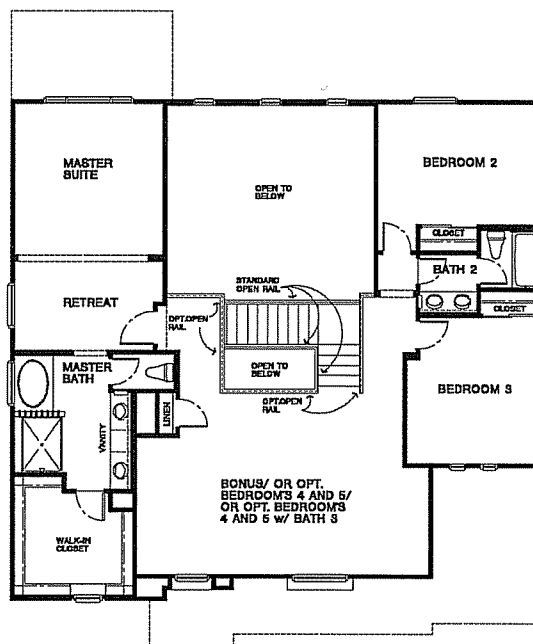
OPT. BEDROOM 6 w/ BATH 4
IN LIEU OF DEN



OPT. BEDROOMS 4 AND 5 IN LIEU OF BONUS



OPT. BEDROOMS 4 AND 5 w/ BATH 3 IN LIEU OF BONUS



SECOND FLOOR

10/14/09 SELLER RESERVES THE RIGHT TO MAKE CHANGES OR MODIFICATIONS TO PLANS, MAPS, PLAN SPECIFICATIONS, MATERIALS, FEATURES AND COLORS WITHOUT NOTICE. PRICES ARE SUBJECT TO CHANGE WITHOUT NOTICE. MAPS, PLANS, LANDSCAPING AND ELEVATION RENDERINGS ARE ARTIST'S CONCEPTIONS, ARE NOT TO SCALE AND MAY NOT ACCURATELY DEPICT THE HOMES OR LOTS AS THEY ARE BUILT. THESE ILLUSTRATIONS MAY DEPICT OPTIONS AND FEATURES THAT ARE NOT STANDARD ON ALL MODELS. OPTIONAL FEATURES MAY BE INCLUDED AT ADDITIONAL COST AND ARE SUBJECT TO CONSTRUCTION CUT-OFF DATES. ALL REFERENCES TO SQUARE FOOTAGES ARE APPROXIMATE AND MAY VARY WITH ELEVATIONS. LOT FENCING AND WALLS MAY NOT BE INCLUDED IN THE PURCHASE, AND IF INCLUDED, WILL VARY ACCORDING TO SIZE AND LOCATION OF THE LOT. EXTERIOR TREATMENTS, WINDOW LOCATIONS AND ROOM CONFIGURATIONS MAY VARY WITH ELEVATION. MODEL HOME INTERIOR DECORATING, LANDSCAPING, FENCING AND OTHER AMENITIES ARE FOR DISPLAY PURPOSES ONLY. THIS BROCHURE IS FOR ILLUSTRATING PURPOSES ONLY AND NOT A PART OF A LEGAL CONTRACT. JOB#0411

